

Research article

Phylogenetic analysis of methanogens from the bovine rumen

Marc F Whitford, Ronald M Teather and Robert J Forster*

Address: Lethbridge Research Centre, Research Branch, Agriculture and Agri-Food Canada, Lethbridge, AB, T1J 4B1, CANADA

E-mail: Marc F Whitford - whitfordm@em.agr.ca; Ronald M Teather - teather@em.agr.ca; Robert J Forster* - forster@em.agr.ca

*Corresponding author

Published: 16 May 2001

BMC Microbiology 2001, 1:5

This article is available from: <http://www.biomedcentral.com/1471-2180/1/5>

(c) 2001 Whitford et al, licensee BioMed Central Ltd.

Received: 5 April 2001

Accepted: 16 May 2001

Abstract

Background: Interest in methanogens from ruminants has resulted from the role of methane in global warming and from the fact that cattle typically lose 6 % of ingested energy as methane. Several species of methanogens have been isolated from ruminants. However they are difficult to culture, few have been consistently found in high numbers, and it is likely that major species of rumen methanogens are yet to be identified.

Results: Total DNA from clarified bovine rumen fluid was amplified using primers specific for Archaeal 16S rRNA gene sequences (rDNA). Phylogenetic analysis of 41 rDNA sequences identified three clusters of methanogens. The largest cluster contained two distinct subclusters with rDNA sequences similar to *Methanobrevibacter ruminantium* 16S rDNA. A second cluster contained sequences related to 16S rDNA from *Methanosphaera stadtmanae*, an organism not previously described in the rumen. The third cluster contained rDNA sequences that may form a novel group of rumen methanogens.

Conclusions: The current set of 16S rRNA hybridization probes targeting methanogenic Archaea does not cover the phylogenetic diversity present in the rumen and possibly other gastro-intestinal tract environments. New probes and quantitative PCR assays are needed to determine the distribution of the newly identified methanogen clusters in rumen microbial communities.

Background

Methanogens are members of the domain Archaea, and fall within the kingdom Euryarchaeota [1]. They are obligate anaerobes and can be unambiguously differentiated from other organisms since they all produce methane as a major catabolic product [2]. Interest in methanogens from ruminants has resulted from the role of methane in global warming and from the fact that cattle typically lose 6 % of ingested energy as methane [3]. Several species of methanogens have been isolated from ruminants, but few have been consistently found in high numbers [4] and it is likely that major species of rumen methanogens are yet to be identified [5, 6]. The most common species of methanogens isolated from the rumen are

strains of *Methanobrevibacter*, *Methanomicrobium*, *Methanobacterium*, and *Methanosarcina* [6, 7]. The taxonomic status of isolated rumen methanogens has not been adequately resolved and will require analysis at the molecular level for clarification [8]. Methanogens are frequently found in association with protozoa [9,10,11,12,13]. A recent study using 16S rRNA probes directed against different families of methanogens indicated that some methanogens have a preferred association with protists while others are primarily free living [14]. We have undertaken this study to examine the free living community of methanogens within bovine rumen fluid using comparative sequence analysis of cloned 16S rRNA

genes (rDNA) amplified from total DNA extracted from clarified rumen fluid.

Results and discussion

Forty-one 16S rDNA sequences were analyzed. The clones were designated ARC, followed by a clone number. The sequences ranged in size from 1009 - 1055 base pairs (bp). On the basis of sequence similarity, all of the sequences were related to methanogens. The sample preparation technique, centrifugation before DNA extraction, allowed us to preferentially examine methanogens isolated from the fluid fraction of rumen contents. Three distinct clusters were generated by nearest-neighbor analysis of the cloned sequences (Fig. 1).

The largest number of clones (24) grouped with *Methanobrevibacter ruminantium*, forming two distinct subclusters that were supported by high bootstrap values (Fig. 1). Subcluster Mbr I consisted of nine identical or nearly identical sequences (similarity values ranged from 99.4 to 100 %) that were 98.5 to 98.8 % similar to *M. ruminantium*. The second subcluster, Mbr II, formed a deeper branch consisting of fifteen cloned 16S sequences that were from 99.3 to 100 % similar to each other. Members of this group had sequence similarity ranging from 97.2 to 97.7 % with *M. ruminantium*. Boone *et al.* [15] considered that a sequence similarity of 98 % or less was evidence for separate species within the methanogens. Based on this, members of Mbr I would be considered *M. ruminantium* strains, while members of cluster Mbr II are a separate species of *Methanobrevibacter*. However, as pointed out by Martinez-Murcia *et al.* [16], 16S sequence similarity values recommended to define a species provide a working definition that has been empirically derived, and values should not be treated as absolute or fixed. For example, 16S rRNA sequences from strains of *Methanobacterium thermoformicicum* and *M. thermoautotrophicum* used in this study were greater than 98 % similar, yet these organisms are considered distinct species.

Methanobrevibacter spp. are thought to be the most significant species of rumen methanogens based on both culture methods [4, 6], and by analysis using rRNA-targeted oligonucleotide probes [14, 17]. The type strain, *Methanobrevibacter ruminantium* M1 [18], is characterized by a requirement for coenzyme M [19]. Two studies [8, 20] indicated the presence of a physiologically diverse population of methanogens with characteristics of *Methanobrevibacter* spp. but distinct from *M. ruminantium* M1. In both cases some isolates had a requirement for coenzyme M while others did not. Miller *et al.* [8] found that none of the strains reacted with an antiserum to the type strain. Similarly, a coenzyme M requiring strain isolated by Lovley *et al.* [20] did not react with a

similar antiserum. These authors were not able to determine the taxonomic status of the bovine *Methanobrevibacter* spp. isolates based on the physiologic, morphologic, and immunologic tests used. Two sequences cloned from protozoal associated methanogens, MEm1 (GenBank ABO26170) and MIp1 (GenBank ABO26168), were associated with subclusters Mbr I and Mbr II, indicating that these clusters are not strictly associated with planktonic methanogens.

The second largest cluster contained eleven clones grouped with *Methanosphaera stadtmanae*. *M. stadtmanae* belongs to the family Methanobacteriaceae. The type strain *M. stadtmanae* MCB-3 is a resident of the human large intestine [21]. However, this is the first report of organisms similar to *M. stadtmanae* being identified in a ruminant. Within this cluster, the cloned sequences formed four subclusters. It should be noted that the significance of the subclusters is not supported by high bootstrap values (Fig. 1). Clones within this cluster had sequence similarity values ranging from 96.1 to 97.3 % with *M. stadtmanae*. The rDNA sequences may represent three distinct species of *Methanosphaera*.

Cluster UN I (Fig. 1) contained six highly similar clones with sequence identity ranging from 99.0 to 99.8 %. This cluster is branched within the Methanosarcinaceae but the rDNA sequences do not share a high degree of sequence similarity with any known 16S rRNA sequences. *Methanosarcina* sp. str. WH1 and *M. thermophila* sequences were the most similar to members of UN I, with sequence identities of approximately 89 %. Significantly, sequences in cluster UN I do not contain sites matching probes designed for 16S rRNA for currently characterized Methanosarcinaceae [5]. Lin *et al.* [17] speculated that the presence of an archaeal group not covered by archaeal group specific probes may be responsible for the lack of additivity of these probes when compared to signals from the general archaeal probe. From 20 to 60 % of the general archaeal probe signal they detected in rumen samples was not accounted for when probe signals specific for Methanococcaceae, Methanobacteriaceae, Methanosarcinales, and Methanomicrobiales were summed. The latter three probes currently cover all rumen methanogens that have been successfully cultured.

Similarly, a lack of additivity in the current set of methanogen targeted probes has been noted when termite gut contents were analyzed [22]. The unknown group of archaeal sequences identified in the present study arise from novel methanogens not previously described and could probably account for some of the signal not identified in previous studies. We are currently designing new sets of 16S rRNA probes and primers that may quantify this unknown group in rumen and intestinal communi-

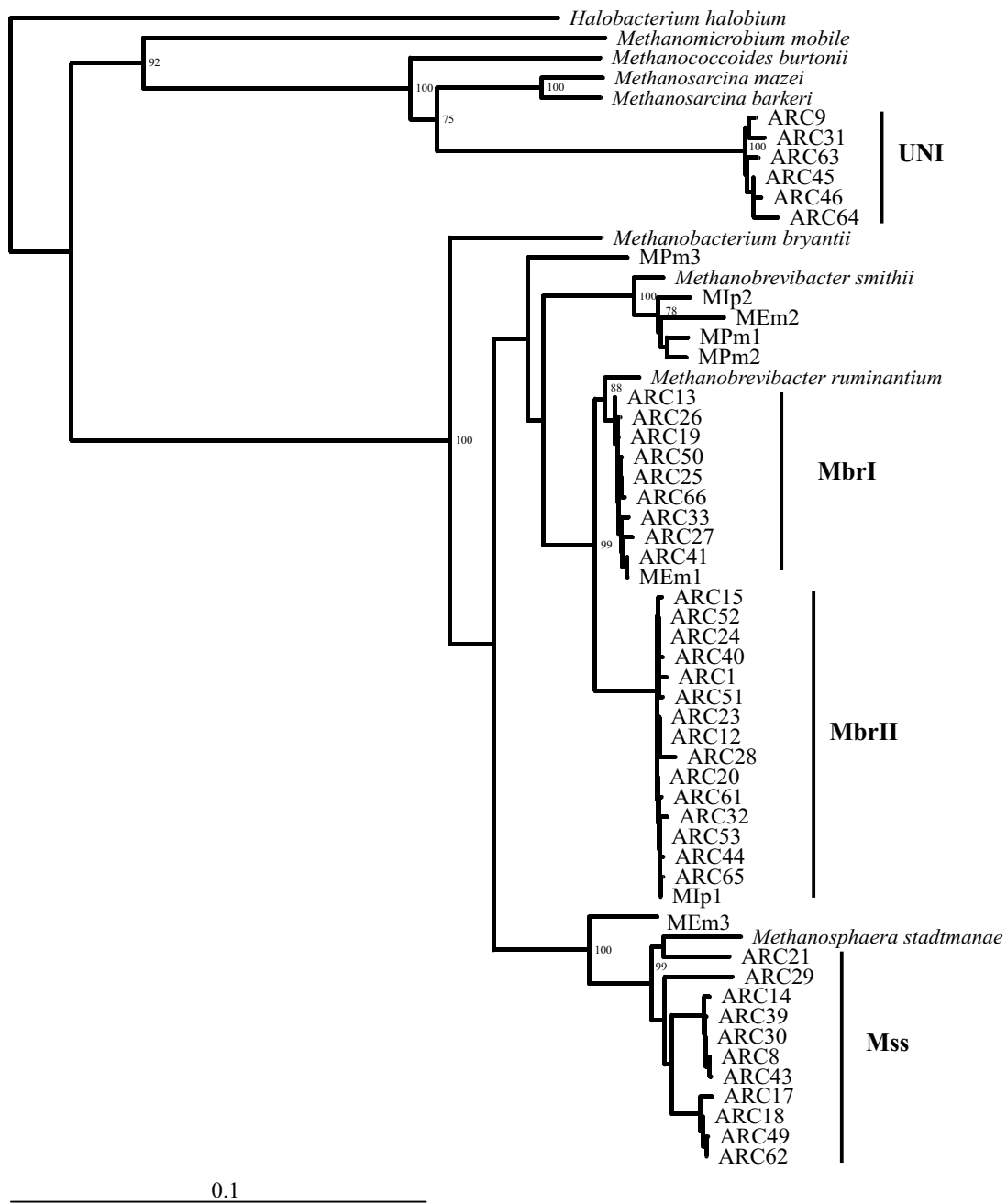


Figure 1
Unrooted phylogenetic tree constructed using a neighbor-joining method. The clones from this study are labeled ARC## and are shown in relation to related species and clones. Brackets indicate clusters UNI (unknown methanogens), Mbr (*Methanobrevibacter ruminantium* related clones), and Mss (*Methanosphaera stadtmanae* related clones). Bootstrap values greater than 70% for 1000 trees are shown at major branch points. *Halobacterium halobium* was used as the out-group. The bar represents a sequence divergence of 10 %.

ties. The discovery of uncultured groups of methanogens and their divergence from known species may make a vaccination approach [23] to the control of rumen methanogenesis difficult.

Recently a study was published that analysed a limited set of archaeal clones obtained from a sheep rumen [24]. The sequences of these clones were determined at the 3' end of the 16S rRNA gene and generated very little, if any, overlap with the clones in this study. The short sequence length of these clones prevented their inclusion in a reliable reconstruction of the phylogenetic tree. Their relationships to the clones presented in this study are therefore unknown. It is interesting to note that the majority of clones in the study of Yanagita *et al.* [24] demonstrated similarity to *M. smithii*, with fewer clones being related to *M. ruminantium*. Sequences of methanogens associated with rumen protozoa have been shown to be highly related to *M. smithii* [13] as well as *M. ruminantium* [12].

Previous culture based studies have isolated methanogens of the genus *Methanomicrobium* and *Methanobacterium* from the bovine rumen [7, 25, 26], although *Methanobrevibacter* and *Methanosarcina* tend to be isolated at higher population levels [27]. The present study did not find any sequences closely related to *Methanomicrobium*, *Methanobacterium*, or *Methanosarcina*. This may be due to differences in sample preparation, animal diet or geographic region. Clearly more studies are needed on the effects of diet and animal species on the diversity of methanogens in the rumen. Of particular benefit would be studies relating the phylogenetic diversity of methanogens in the rumen, using techniques such as Denaturing Gradient Gel Electrophoresis (DGGE), to the amount of methane produced by the animal.

Conclusions

This study has revealed the phylogenetic diversity of methanogens found in the rumen fluid of dairy cattle. One of the methanogen groups is highly similar to the type strain of *M. ruminantium*, but other groups represent methanogens not previously recovered from the rumen or not yet represented in culture collections. Based on sequence analysis it was found that the set of probes for specific groups of methanogens developed by Raskin *et al.* [5] would not hybridize to a potentially important group of rumen methanogen sequences identified in this study. Additional studies need to be conducted to determine the quantitative significance of the newly identified groups, as well as how the diversity of rumen methanogens varies with animal diet.

Materials and methods

Rumen sampling and animal diets

Rumen samples were obtained after manual mixing of rumen contents from five rumen-fistulated mature Holstein dairy cows. The contents were squeezed through two layers of cheesecloth and then subsampled for extraction of DNA. The cattle were mid-lactation cows fed a total mixed ration consisting of 9 % hay, 26 % alfalfa haylage, 30 % corn silage, and 35 % concentrate (13 % barley, 50.8 % corn, 28.1 % roasted soybeans, plus vitamins/minerals). Samples from the cattle were obtained prior to the first morning feed.

DNA extraction, PCR amplification, cloning and sequencing

Primers specific for the 16S rDNA sequences from Archaea [28] were used to amplify DNA extracted from clarified rumen fluid of the cows. Rumen fluid was clarified by centrifugation for 10 min at 600 × g, 4°C, allowing us to examine free-living Archaea, avoiding symbiotic methanogens associated with protists [9,10,11]. Rumen fluid DNA extraction was carried out according to the method of Whitford *et al.* [29], except that extractions were carried out only on fresh rumen fluid and the resulting DNA was frozen at -70°C until used in the PCR reaction. The primers used were 1Af (5'-TCYGKTTGATCCYGSCRAG-3') and 1100Ar (5'-TGGGTCTCGCTCGTTG-3'). PCR reactions were set up as described [29] using Taq DNA polymerase (Boehringer Mannheim Inc., Indianapolis, IN), except that 5 % (wt/vol) acetamide [30] was included in the reaction mixtures. A separate reaction was done for a sample from each of the five cows. Amplification was performed for 30 cycles of 95°C for 40 s, 55°C for 1 min, 72°C for 2 min, and a final extension step at 72°C for 3.5 min [31]. The PCR reactions were pooled and the resulting 1.1 Kb PCR product was gel purified, cloned into pGEM-T (Promega Corp., Madison, WI) and transformed into electrocompetent *Escherichia coli* XL1-Blue MFR' cells (Stratagene, La Jolla CA). Plasmids from randomly selected transformants containing appropriately sized inserts were sequenced as described [29].

Phylogenetic analysis

Sequence fragments were assembled using Sequencher version 3.1 (Gene Codes Corp., Ann Arbor, MI). Sequences were compared using the Blast algorithm to sequences available in GenBank. Sequences were aligned with related sequences using the program TKDCSE [32]. Phylogenetic analysis was performed using a neighbor-joining method with pair-wise gap removal, the Kimura-2 correction and evaluating 1000 bootstrap trees as implemented in the PHYLO_WIN package [33]. Sequences were also compared by generating similarity matrices. Nucleotide sequences have been deposited in the Gen-

Bank database under accession numbers AF029171 - AF029211.

Reference strains and cloned sequences used in phylogenetic analysis

Bacterial strains and cloned sequences are listed below with their GenBank accession numbers: *Halobacterium halobium* (M11583), *Methanosarcina barkeri* (M59144), *Methanosarcina mazei* (U20151), *Methanococcoides burtonii* (X65537), *Methanobolus taylorii* (U20154), *Methanomicrobium mobile* (M59142), *Methanobacterium bryantii* (M59124), *Methanobrevibacter smithii* (AF054208), *Methanobrevibacter ruminantium* ATCC 35063 (from the Ribosomal Database Project (<http://cme.msu.edu/RDP>)), *Methanosphaera stadtmanae* (M59139), MPm3 (AB026175), MIP2 (AB026169), MPm1 (AB026173), MEM2 (AB026171), MPm2 (AB026174), MEM1 (AB026170), MIP1 (AB026168), MEM3 (AB026172).

Acknowledgments

This research was supported by the Dairy Farmers of Canada and Agriculture and Agri-Food Canada through the Matching Investment Initiative. Critical reading of the manuscript by Dr. Athol Klieve is gratefully acknowledged. This paper represents LRC contribution number 3870005.

References

- Woese CR, Kandler O, Wheelis ML: **Towards a natural system of organisms: proposal for the domains Archaea, Bacteria, and Eucarya.** *Proc. Natl. Acad. Sci. USA* 1990, **87**:4576-4579
- Bergey DH: **The methanogens.** In: *Bergey's Manual of Determinative Bacteriology* Edited by Holt JG, 9 ed. pp. 719-725. Baltimore: Williams and Wilkins Co.; 1994, 719-725
- Johnson KA, Johnson DE: **Methane emissions from cattle.** *J. Anim. Sci.* 1995, **73**:2483-2492
- Stewart CS, Flint HJ, Bryant MP: **The rumen bacteria.** In: *The Rumen Microbial Ecosystem* Edited by Hobson PN, Stewart CS, 2 ed. pp. 10-72. New York: Blackie Academic and Professional; 1997, 10-72
- Raskin L, Stromley JM, Rittmann BE, Stahl DA: **Group-specific 16S rRNA hybridization probes to describe natural communities of methanogens.** *Appl. Environ. Microbiol.* 1994, **60**:1232-1240
- Wolin MJ, Miller TL, Stewart CS: **Microbe-microbe interactions.** In: *The Rumen Microbial Ecosystem* Edited by Hobson PN, Stewart CS, 2 ed. pp. 467-491. New York: Blackie Academic and Professional; 1997, 467-491
- Jarvis GN, Strompl C, Burgess DM, Skillman LC, Moore ER, Joblin KN: **Isolation and identification of ruminal methanogens from grazing cattle.** *Curr. Microbiol.* 2000, **40**:327-332
- Miller TL, Wolin MJ, Hongxue Z, Bryant MP: **Characteristics of methanogens isolated from bovine rumen.** *Appl. Environ. Microbiol.* 1986, **51**:201-202
- Finlay BJ, Esteban G, Clarke KJ, Williams AG, Embley TM, Hirt RP: **Some rumen ciliates have endosymbiotic methanogens.** *FEMS Microbiol. Lett.* 1994, **117**:157-162
- Lloyd D, Ralphs J, Durrant L, Williams AG, Amann R: **Studies of the bacterial endosymbionts of "anaerobic protozoa" using fluorescently-labelled rRNA-targeted oligonucleotide probes.** *Biochem. Soc. Trans.* 1994, **22**:S323-
- Lloyd D, Williams AG, Amann R, Hayes AJ, Durrant L, Ralphs JR: **Intracellular prokaryotes in rumen ciliate protozoa - detection by confocal laser-scanning microscopy after in-situ hybridization with fluorescent 16S ribosomal-RNA probes.** *Eur. J. Protist.* 1996, **32**:523-531
- Tokura M, Tajima K, Ushida K: **Isolation of Methanobrevibacter sp. as a ciliate-associated ruminal methanogen.** *J. Gen. Appl. Microbiol.* 1999, **45**:43-47
- Tokura M, Chagan I, Ushida K, Kojima Y: **Phylogenetic study of methanogens associated with rumen ciliates.** *Curr. Microbiol.* 1999, **39**:123-8
- Sharp R, Ziemer CJ, Marshall DS, Stahl DA: **Taxon-specific associations between protozoal and methanogen populations in the rumen and a model system.** *FEMS Microbiol. Ecol.* 1998, **26**:71-78
- Boone DR, Whitman WB, Rouviere P: **Diversity and taxonomy of methanogens.** In: *Methanogenesis* Edited by Ferry JG. pp. 35-80. New York: Chapman and Hall, Inc.; 1993, 35-80
- Martinez-Murcia AJ, Benlloch S, Collins MD: **Phylogenetic interrelationships of members of the genera Aeromonas and Plesiomonas as determined by 16S ribosomal DNA sequencing: lack of congruence with the results of DNA-DNA hybridizations.** *Int. J. Syst. Bacteriol.* 1992, **42**:412-421
- Lin C, Raskin L, Stahl DA: **Microbial community structure in gastrointestinal tracts of domestic animals: comparative analysis using rRNA-targeted oligonucleotide probes.** *FEMS Microbiol. Ecol.* 1997, **22**:281-294
- Smith PH, Hungate RE: **Isolation and characterization of Methanobacterium ruminantium n. sp.** *J. Bacteriol.* 1958, **75**:713-718
- Taylor CD, McBride BC, Wolfe RS, Bryant MP: **Coenzyme M, essential for growth of a rumen strain of Methanobacterium ruminantium.** *J. Bacteriol.* 1974, **120**:974-975
- Lovley RD, Greening RC, Ferry JG: **Rapidly growing rumen methanogenic organisms that synthesize coenzyme M and has a high affinity for formate.** *Appl. Environ. Microbiol.* 1984, **48**:81-87
- Miller TL, Wolin MJ: **Methanosphaera stadtmanae gen. nov., sp. nov.: a species that forms methane by reducing methanol with hydrogen.** *Arch. Microbiol.* 1985, **141**:116-122
- Brauman A, Dore J, Eggleton P, Bignell D, Breznak JA, Kane MD: **Molecular phylogenetic profiling of prokaryotic communities in guts of termites with different feeding habits.** *FEMS Microbiol. Ecol.* 2001, **35**:27-36
- Baker SK: **Biology of rumen methanogens, and stimulation of animal immunity.** In: *Meeting the Kyoto Target. Implications for the Australian Livestock Industries.*; 1999; Canberra, N.C.T., Australia. 29-37
- Yanagita K, Kamagata Y, Kawaharasaki M, Suzuki T, Nakamura Y, Minato H: **Phylogenetic analysis of methanogens in sheep rumen ecosystem and detection of Methanomicrobium mobile by fluorescence in situ hybridization.** *Biosci. Biotechnol. Biochem.* 2000, **64**:1737-1742
- Opperman RA, Nelson WO, Brown RE: **In vitro studies on methanogenic rumen bacteria.** *J. Dairy Sci.* 1957, **40**:779-788
- Paynter MJB, Hungate RB: **Characterization of Methanobacterium mobilis, sp. nov., isolated from the bovine rumen.** *J. Bacteriol.* 1968, **95**:1943-1951
- McAllister TA, Okine EK, Mathison GW, Cheng K-J: **Dietary, environmental and microbiological aspects of methane production in ruminants.** *Can. J. Anim. Sci.* 1996, **76**:231-243
- Embley TM, Finlay BJ, Thomas RH, Dyal PL: **The use of rRNA sequences and fluorescent probes to investigate the phylogenetic positions of the anaerobic ciliate Metopus palaeiformis and its archaeobacterial endosymbiont.** *J. Gen. Microbiol.* 1992, **138**:1479-1487
- Whitford MF, Forster RJ, Beard CE, Gong J, Teather RM: **Phylogenetic analysis of rumen bacteria by comparative sequence analysis of cloned 16S rRNA genes.** *Anaerobe* 1997, **4**:153-163
- Reysenbach A-L, Giver LJ, Wickham GS, Pace NR: **Differential amplification of rRNA genes by polymerase chain reaction.** *Appl. Environ. Microbiol.* 1992, **58**:3417-3418
- Hales BA, C. E, Ritchie DA, Hall G, Pickup RW, Saunders JR: **Isolation and identification of methanogen-specific DNA from blanket bog peat by PCR amplification and sequence analysis.** *Appl. Environ. Microbiol.* 1996, **62**:668-675
- De Rijk P, De Wachter R: **DCSE v2.54, an interactive tool for sequence alignment and secondary structure research.** *Comput. Appl. Biosci.* 1993, **9**:735-740
- Galtier N, Gouy M, Gautier G: **SEA_VIEW and PHYLO_WIN: two graphic tools for sequence alignment and molecular phylogeny.** *Comput. Appl. Biosci.* 1996, **12**:543-548